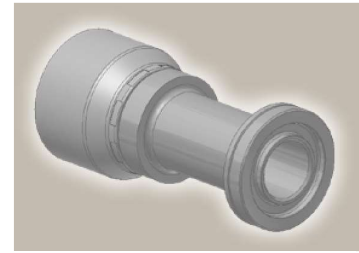
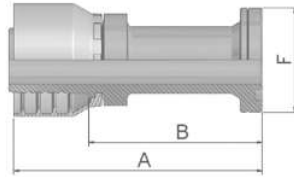


## 6A ISO 6162-2-Flange Straight

ISO 12151-3-S-S – SFS  
(42.0 MPa/ 6000 psi)

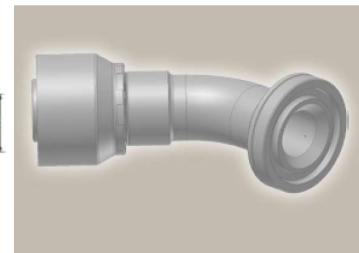
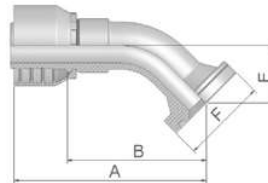


| Part Number |             | Hose I.D. |       |      |      | Flange | A   | B   | F  |
|-------------|-------------|-----------|-------|------|------|--------|-----|-----|----|
| 46 series   | 48 series   | DN        | Inch  | Size | mm   | Inch   | mm  | mm  | mm |
| 16A46-8-8   | 16A48-8-8   | 12        | 1/2   | -8   | 12.7 | 1/2    | 75  | 51  | 32 |
|             | 16A48-12-10 | 16        | 5/8   | -10  | 15.9 | 3/4    | 60  | 35  | 41 |
| 16A46-12-12 | 16A48-12-12 | 19        | 3/4   | -12  | 19.1 | 3/4    | 96  | 70  | 41 |
| 16A46-12-16 | 16A48-12-16 | 25        | 1     | -16  | 25.4 | 3/4    | 99  | 69  | 41 |
| 16A46-16-16 | 16A48-16-16 | 25        | 1     | -16  | 25.4 | 1      | 111 | 81  | 48 |
| 16A46-20-20 |             | 31        | 1 1/4 | -20  | 31.8 | 1 1/4  | 122 | 84  | 54 |
|             | 16A48-20-20 | 31        | 1 1/4 | -20  | 31.8 | 1 1/4  | 130 | 83  | 54 |
|             | 16A48-24-24 | 38        | 1 1/2 | -24  | 38.1 | 1 1/2  | 139 | 101 | 64 |
|             | 16A48-32-32 | 51        | 2     | -32  | 50.8 | 2      | 172 | 124 | 79 |

To select corresponding half-flange and O-ring see section Eb.

## 6F ISO 6162-2-Flange 45° Elbow – Heavy Series

ISO 12151-3 – E45-S – SFS 45°  
(42.0 MPa/ 6000 psi)



| Part Number |             | Hose I.D. |       |      |      | Flange | A   | B   | E  | F  |
|-------------|-------------|-----------|-------|------|------|--------|-----|-----|----|----|
| 46 series   | 48 series   | DN        | Inch  | Size | mm   | Inch   | mm  | mm  | mm | mm |
| 16F46-12-12 | 16F48-12-12 | 19        | 3/4   | -12  | 19,1 | 3/4    | 88  | 62  | 26 | 41 |
| 16F46-16-16 | 16F48-16-16 | 25        | 1     | -16  | 25,4 | 1      | 107 | 78  | 32 | 48 |
|             | 16F48-20-20 | 31        | 1 1/4 | -20  | 31,8 | 1 1/4  | 141 | 94  | 38 | 54 |
|             | 16F48-24-24 | 38        | 1 1/2 | -24  | 38,1 | 1 1/2  | 150 | 112 | 44 | 64 |
|             | 16F48-32-32 | 51        | 2     | -32  | 50,8 | 2      | 200 | 152 | 56 | 79 |

To select corresponding half-flange and O-ring see section Eb.

Approved **fitting series** for **hose types**, depending on size: Also available in stainless steel. Details can be found in CAT 4400.1/UK

|                        |       |       |       |       |       |         |            |       |       |     |       |       |            |       |       |     |     |
|------------------------|-------|-------|-------|-------|-------|---------|------------|-------|-------|-----|-------|-------|------------|-------|-------|-----|-----|
| <b>46</b> or <b>48</b> | 441   | 461LT | 462   | 462TC | 462ST | 629PU   | 692PU Twin |       |       |     |       |       |            |       |       |     |     |
| <b>46</b>              | 463   | 492   | 492ST | 492TC | 692   | 692Twin | 692TC      | BCH1  |       |     |       |       |            |       |       |     |     |
| <b>48</b>              | 301SN | 304   | 387   | 387ST | 387TC | 421RH   | 421SN      | 426   | 421TC | 436 | 441RH | 462PU | 462PU Twin | BCH2  | HT2   | ... |     |
|                        | 471TC | 477   | 477ST | 477TC | 477RH | 487     | 487ST      | 487TC | 493   | 787 | 787TC | 787ST | 797        | 797TC | 797ST | 811 | 881 |